

## Technical Rider

<b>Performance</b>	<b>“PRÓXIMO”</b>	
<b>Country</b>	Argentina	
<b>Playwright</b>	Claudio Tolcachir	
<b>Direction</b>	Claudio Tolcachir	
<b>Cast</b>	Lautaro Perotti, Santiago Marín	
<b>Premiere</b>	May , 2017	
<b>Length</b>	70 minutes	
<b>Contact</b>		
<b>Video Link</b>	<a href="https://goo.gl/Nd2Uqa">https://goo.gl/Nd2Uqa</a>	
<b>Web Site</b>		
<b>Touring Party</b>		
<b>Extra Luggage*</b>	<b>Total Weight</b>	<b>Amount of Luggage</b>
	46 kilos	2 extra luggage (23 each) with production props and clothes*

\*Paid by THE ORGANISER.

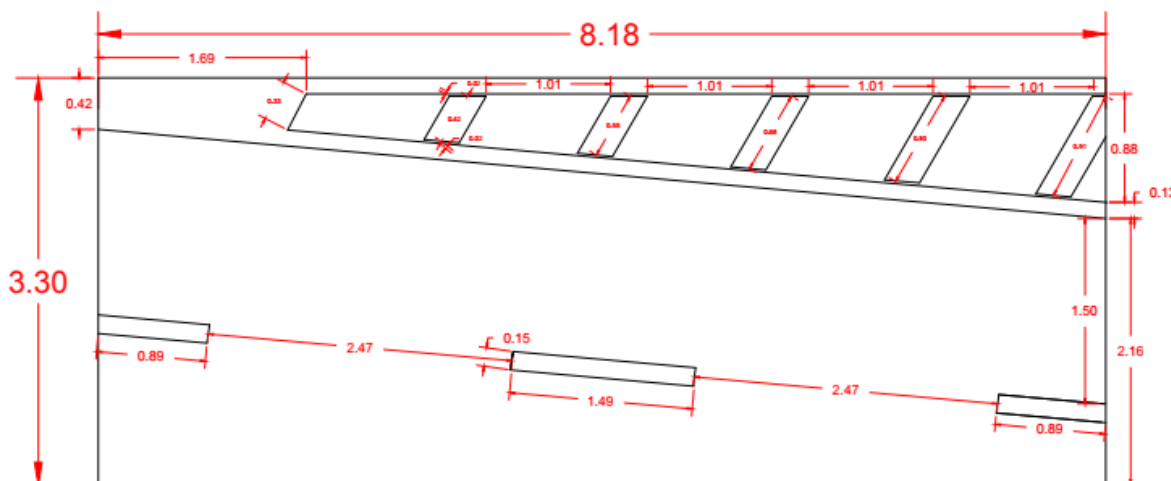
# 1. – Stage Measurements

	Minimum	Preferred
Wide	10 mts	11,50 m
High	4,50 m	more than 4,50
Depth	8,50 m	11,50 m
High under grill	4,50 m	more than 4,50
Proscenium arch high	m	m

## Type of Stage

**THE ORGANISER must send to THE COMPANY pictures and plot of the venue in DWG or WYG and PDF. (grill plan, seating plan and stage plan). Depending on the venue’s lay-out, some seats may have to be cancelled to allow good sight-lines. Please contact technical crew for more information.**

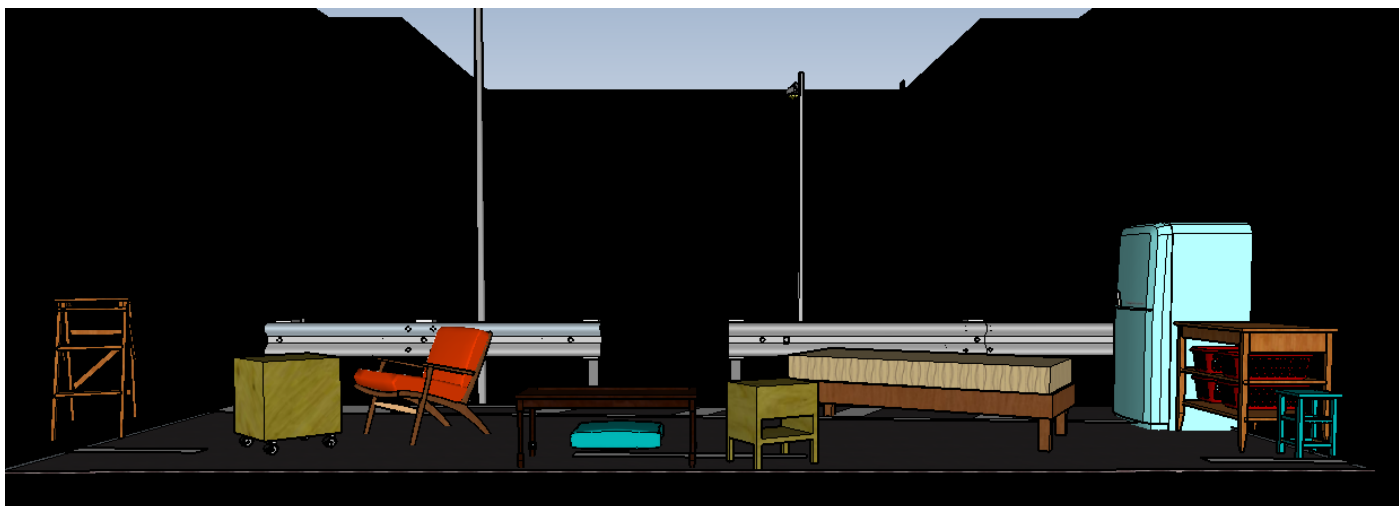
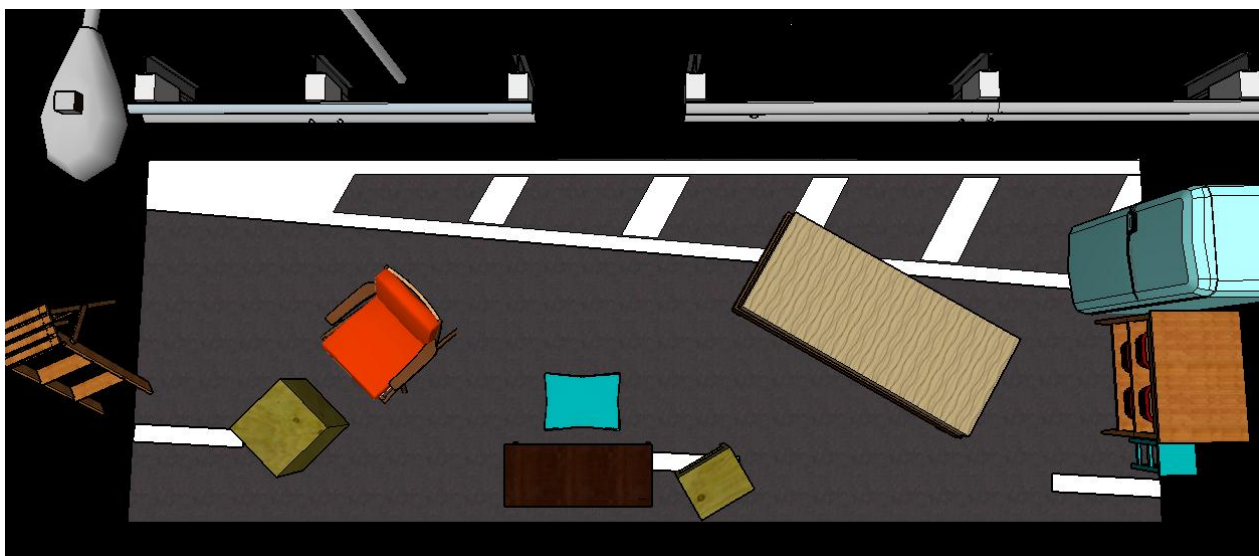
## Stage Floor



PISO  
 ESC 1:25  
 OBRA: "PRÓXIMO"  
 DIRECCION: CLAUDIO TOLCACHIR  
 ESCENOGRÁFA: SOFIA VICINI

**In case the stage has a higher gradient than 0º THE ORGANISER must inform THE COMPANY**

2.- STAGE DESIGN Stage Design Reference:



### 3. – SOUND

#### Equipment provided by THE ORGANISER\*

*THE ORGANISER must send, at least 14 days before load-in, to THE COMPANY a complete proposal of all sound material that will be provide for the show.*

### 4. – SUBTITLES

#### Equipment provided by THE ORGANISER

1 video projector 4000 Lumen

1 shutter (dowser) for the projector lens

1 laptop with subtitles on Power Point.

1 grey 450cm x 70cm screen. The location of the screen will be given on the plan.

All installation system, cabling and support-

### 5. – LIGHTS

#### Lighting equipment provided by THE ORGANISER

After receiving venue's plot with lightning pipes position and lightning inventory, THE COMPANY will send the final detail of the instruments to be used.

THE ORGANISER will provide all the filters according to the lighting plot.

THE ORGANISER must send to THE COMPANY technical rider and plots of the venue. THE COMPANY will send a hanging plan to THE ORGANISER, a detail of the instruments used in this attempt to optimize the entire inventory of the venue. Any material that is not on data sheet should lease and paid by THE ORGANISER, unless the contract provides otherwise

*\*THE COMPANY is not responsible for leased equipment.*

*All equipment must be in good physical and operational conditions, should work 100% and have all cables.*

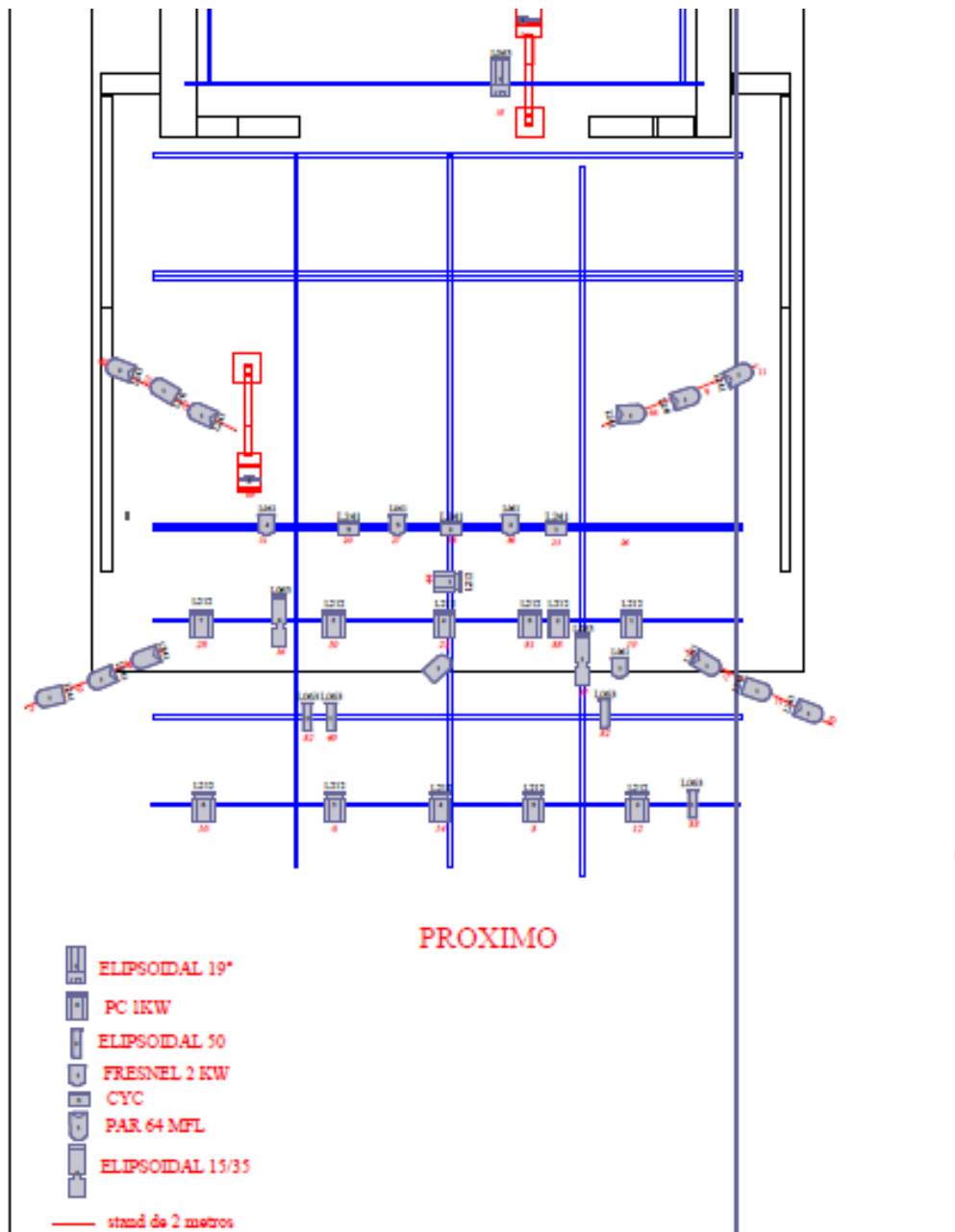
*The components of the equipment must be original and not replaced by models and / or different equipment brands supported.*

*The full team rider that the employer intends to be used by THE COMPANY shall be submitted and approved by the technical team of the company 15 days before the show.*

*Technical material must be properly protected from the rain and sun, if mounted outdoors.*

*At all times during the sound check and during the show must be present a responsible by the leased equipment.*

# LIGHT PLOT REFERENCE



## 6. – SCHEDULE

### FIRST SET UP DAY

09.00 -10300: **Truck unloading:** 4 porters

09.00 -13.00: **Set up** 1 stage manager, 2 machinists, 2 light, 1 sound , 1 wardrobe

14.30 -19.30: **Set up** 1 stage manager, 1 machinist, 2 light, 1 sound/ video (subtitles)

20.30 -22.30: **Set up** 1 stage manager, 3 machinists, 2 light, 1 sound/video (subtitles)

### SECOND SET UP DAY AND FIRST PERFORMANCE

14.30 -1 hr before the show: Set up, Sound check, focusing, and dress rehearsal with super-titles. 1 machinists, 2 light, 1 sound, 1 video.

## 7.- TECHNICAL STAFF REQUIRED

The Company will require a Technical Director from the Presenter's office, knowledgeable of the technical specifications for the venue, as mediator between the COMPANY Production staff and local crews, House personnel, Presenter's office.

The Company will require a professional, experienced, local technical crew with authority to access all areas of the facility. The crew will be required for loading and unloading trucks, set up of lights, sound, decor, and equipment.

The Company travels with the following production staff:

1 light, 1 tour manager

The technical crew for the shows must be the same for the rehearsals.

\*Catering must be available during the set up, rehearsal and shows. (Bottled water, fruit station, nuts, coffee, tee...)

*If the technical crew doesn't speak English or Spanish, 1 interpreter will be needed for setup, rehearsals and performances*

Both THE ORGANISER and THE COMPANY must approve the technical planning. All changes must be communicated and approved by THE COMPANY.

## 8. – LAUNDRY SERVICE.

Laundry service might be needed. Please contact with our tour manager for more information.

Actors clothes should be washed after every presentation

## 9.- CONTACT

TIMBRE 4

Producer : Jonathan Zak/ Maxime Seuge

Cell phone: Jonathan Zak +54-9-1164432102 //// Maxime Seuge +54-9-1169501150

Email. [jonathanzak@gmail.com](mailto:jonathanzak@gmail.com) / [mseuge@gmail.com](mailto:mseuge@gmail.com)